

## Mental Arithmetic 1

### Times Tables

$5 \times 5 = \underline{\quad}$

$5 \times 12 = \underline{\quad}$

$10 \times 11 = \underline{\quad}$

$12 \times 7 = \underline{\quad}$

$4 \times 9 = \underline{\quad}$

$3 \times 5 = \underline{\quad}$

$3 \times 7 = \underline{\quad}$

$2 \times 3 = \underline{\quad}$

$8 \times 11 = \underline{\quad}$

$4 \times 2 = \underline{\quad}$

$11 \times 12 = \underline{\quad}$

$6 \times 3 = \underline{\quad}$

$5 \times 6 = \underline{\quad}$

$6 \times 2 = \underline{\quad}$

$11 \times 11 = \underline{\quad}$

### Mental Addition and Subtraction

$3 - 2 = \square$

$6 - 6 = \square$

$9 - 0 = \square$

$9 - 7 = \square$

$6 + 4 = \square$

$0 + 8 = \square$

$8 - 7 = \square$

$8 - 2 = \square$

$2 + 3 = \square$

$5 - 5 = \square$

$2 + 1 = \square$

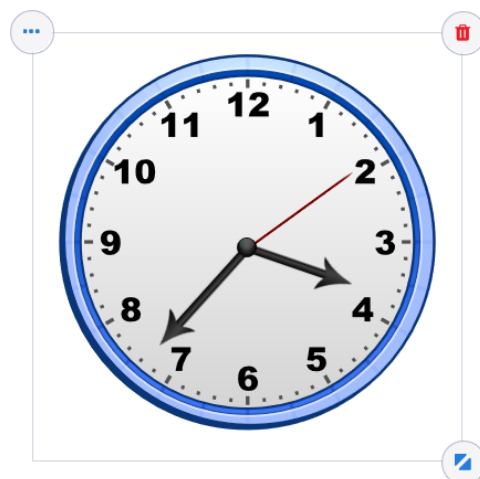
$3 + 5 = \square$

$0 + 7 = \square$

$2 + 6 = \square$

$9 - 6 = \square$

### Telling the Time



## Mental Arithmetic 2

### Times Tables

$5 \times 3 = \underline{\quad}$

$3 \times 1 = \underline{\quad}$

$6 \times 3 = \underline{\quad}$

$10 \times 2 = \underline{\quad}$

$12 \times 8 = \underline{\quad}$

$6 \times 10 = \underline{\quad}$

$3 \times 6 = \underline{\quad}$

$11 \times 6 = \underline{\quad}$

$4 \times 3 = \underline{\quad}$

$4 \times 2 = \underline{\quad}$

$9 \times 12 = \underline{\quad}$

$10 \times 4 = \underline{\quad}$

$4 \times 12 = \underline{\quad}$

$4 \times 11 = \underline{\quad}$

$9 \times 6 = \underline{\quad}$

### Mental Addition and Subtraction

$9 - 3 = \underline{\quad}$

$1 + 8 = \underline{\quad}$

$3 - 2 = \underline{\quad}$

$9 - 6 = \underline{\quad}$

$8 - 2 = \underline{\quad}$

$3 + 1 = \underline{\quad}$

$5 - 4 = \underline{\quad}$

$1 + 3 = \underline{\quad}$

$2 + 7 = \underline{\quad}$

$5 - 2 = \underline{\quad}$

$7 - 3 = \underline{\quad}$

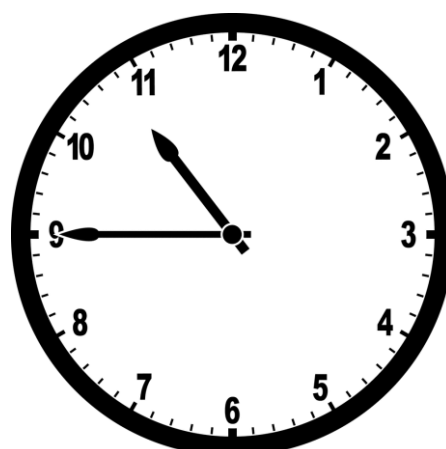
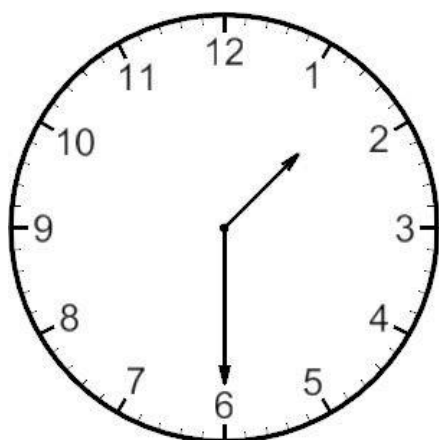
$9 - 3 = \underline{\quad}$

$3 + 4 = \underline{\quad}$

$5 - 4 = \underline{\quad}$

$2 - 2 = \underline{\quad}$

### Telling the Time



### Mental Arithmetic 3

#### Times Tables

$4 \times 10 = \underline{\quad}$

$12 \times 5 = \underline{\quad}$

$11 \times 9 = \underline{\quad}$

$11 \times 7 = \underline{\quad}$

$7 \times 10 = \underline{\quad}$

$12 \times 7 = \underline{\quad}$

$10 \times 12 = \underline{\quad}$

$6 \times 7 = \underline{\quad}$

$5 \times 8 = \underline{\quad}$

$3 \times 6 = \underline{\quad}$

$10 \times 4 = \underline{\quad}$

$9 \times 7 = \underline{\quad}$

$10 \times 11 = \underline{\quad}$

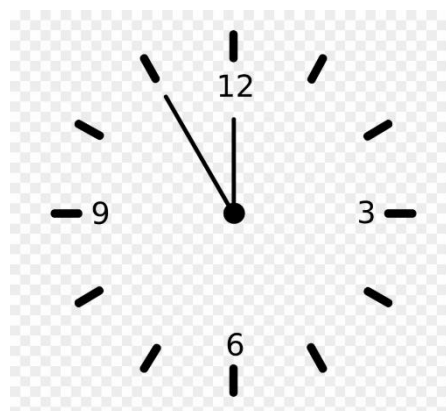
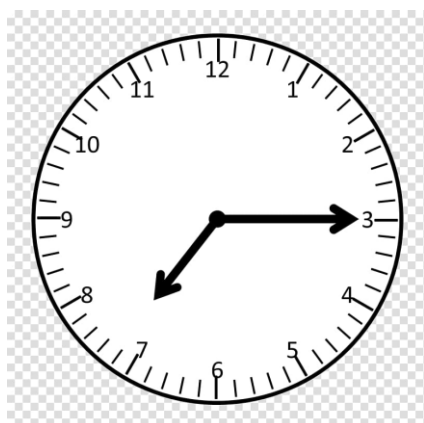
$5 \times 2 = \underline{\quad}$

$11 \times 8 = \underline{\quad}$

#### Mental Addition and Subtraction

$2 + 2 = \underline{\quad}$	$2 + 7 = \underline{\quad}$	$8 + 1 = \underline{\quad}$	$10 - 9 = \underline{\quad}$	$7 - 6 = \underline{\quad}$
$9 - 1 = \underline{\quad}$	$9 - 1 = \underline{\quad}$	$3 + 2 = \underline{\quad}$	$5 + 5 = \underline{\quad}$	$9 - 2 = \underline{\quad}$
$10 - 3 = \underline{\quad}$	$3 - 1 = \underline{\quad}$	$3 + 4 = \underline{\quad}$	$3 + 3 = \underline{\quad}$	$7 - 3 = \underline{\quad}$

#### Telling the Time



## Mental Arithmetic 4

### Times Tables

$4 \times 10 = \underline{\quad}$

$1 \times 9 = \underline{\quad}$

$5 \times 4 = \underline{\quad}$

$10 \times 12 = \underline{\quad}$

$4 \times 7 = \underline{\quad}$

$11 \times 9 = \underline{\quad}$

$5 \times 9 = \underline{\quad}$

$4 \times 3 = \underline{\quad}$

$10 \times 1 = \underline{\quad}$

$8 \times 5 = \underline{\quad}$

$9 \times 10 = \underline{\quad}$

$9 \times 5 = \underline{\quad}$

$12 \times 3 = \underline{\quad}$

$9 \times 9 = \underline{\quad}$

$4 \times 6 = \underline{\quad}$

### Mental Addition and Subtraction

$3 + 2 = \underline{\quad}$	$9 - 5 = \underline{\quad}$	$5 + 4 = \underline{\quad}$	$5 - 2 = \underline{\quad}$	$7 + 1 = \underline{\quad}$
$3 + 5 = \underline{\quad}$	$6 + 2 = \underline{\quad}$	$6 - 6 = \underline{\quad}$	$9 - 4 = \underline{\quad}$	$8 - 5 = \underline{\quad}$
$9 - 4 = \underline{\quad}$	$9 - 6 = \underline{\quad}$	$2 + 3 = \underline{\quad}$	$5 - 3 = \underline{\quad}$	$4 + 4 = \underline{\quad}$

### Telling the Time



## Mental Arithmetic 5

### Times Tables

$4 \times 12 = \underline{\quad}$

$5 \times 4 = \underline{\quad}$

$12 \times 9 = \underline{\quad}$

$8 \times 9 = \underline{\quad}$

$9 \times 7 = \underline{\quad}$

$10 \times 6 = \underline{\quad}$

$10 \times 5 = \underline{\quad}$

$8 \times 10 = \underline{\quad}$

$12 \times 7 = \underline{\quad}$

$1 \times 7 = \underline{\quad}$

$2 \times 12 = \underline{\quad}$

$3 \times 9 = \underline{\quad}$

$9 \times 8 = \underline{\quad}$

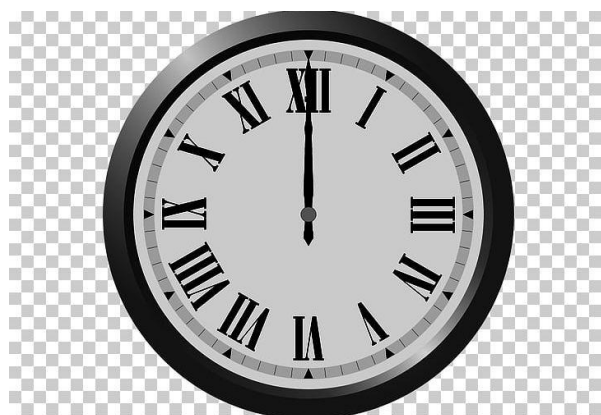
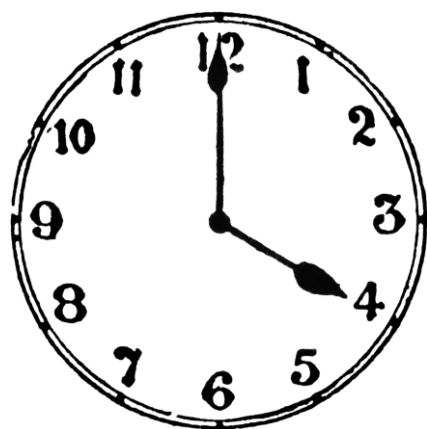
$10 \times 5 = \underline{\quad}$

$2 \times 10 = \underline{\quad}$

### Mental Addition and Subtraction

$8 - 2 = \underline{\quad}$	$1 + 3 = \underline{\quad}$	$2 + 2 = \underline{\quad}$	$10 - 4 = \underline{\quad}$	$5 - 5 = \underline{\quad}$
$4 + 3 = \underline{\quad}$	$3 + 6 = \underline{\quad}$	$2 + 3 = \underline{\quad}$	$6 + 1 = \underline{\quad}$	$7 + 2 = \underline{\quad}$
$6 - 4 = \underline{\quad}$	$10 - 8 = \underline{\quad}$	$4 + 2 = \underline{\quad}$	$8 - 6 = \underline{\quad}$	$2 + 3 = \underline{\quad}$

### Telling the Time



---

---